



Royal Wootton Bassett and Cricklade Community Identified Priorities Newsletter. March 2018

Children and Young People

RWB and Cricklade Community Area

What has been done so far:

1. A **mental health themed ‘takeover’** of the Area Board was held on 10th January 2018 to raise awareness of mental health and wellbeing, increase understanding and reduce stigma and discrimination.
2. Working with public health, a new offer to help schools **‘Beat the Bugs’** and so reduce school absence is available to local primary schools. Please contact your CEM if your primary school is interested in having a fun, interactive session with a public health nurse to help reduce the spread of infection, alexa.davies@wiltshire.gov.uk, 01249 706610.

Priorities November 2016

1. Mental and emotional health (65.12%)
2. Educational attainment (63.95%)
3. Positive leisure time activities (55.81%)

Wiltshire Wildlife Trust have been working with RWB Academy, primary schools, MOD Lyneham and community groups to spread the reduce, reuse recycle message. They have capacity to work with a few more schools, so do get in touch if your school would like to be involved.



3. **Community Mentoring And Support (CMAS)** provide positive leisure time activities for young people through their Area Board commission in Cricklade, RWB and Lyneham. This includes running a series of local youth groups, doing targeted youth work to address specific issues with the groups, personal development and mentoring for the young people involved.

In Royal Wootton Bassett, volunteer Cllr Sue Hughes from RWB town council is working with Wiltshire Council and other partners to develop a **local youth network** for the town, bringing together young people and key stakeholders to create a forum where local needs can be identified and youth voices heard.

As the weather warms up, the **Big Pledge** is coming! The Big Pledge is Wiltshire Council’s active health campaign, encouraging people to get up and move more for a host of health benefits. We will be encouraging people of every age to get behind this eight-week campaign, which opens for registration from **16th April** and runs from 14th May until 8th July.

This year will be linked with the Football World Cup in Russia and the main change from previous years is that it will be a challenge measuring your active minutes as opposed to your distance covered.



Royal Wootton Bassett and Cricklade Community Identified Priorities Newsletter. March 2018

Community Safety

RWB and Cricklade Community Area

What has been done so far:

1. Purton Parish Council have been successful in securing match funding from the Area Board community grant scheme for installation of a CCTV system at the Village Centre, Church Street. After spates of vandalism and anti-social behaviour, working with the police and associated bodies the parish council was advised to gain the added security and deterrent of CCTV. A combined working party and supplier knowledge allowed a system to be installed that not only recognises movement and activity at night but also has Vehicle Number Plate Recognition.

The system is now installed and gives greater security for the buildings and the associated users of the clubs and outside space. A noticeable lack of activity has already been recorded and a reduction in associated issues.

2. The Community Area Transport Group continues to work towards making highways improvements, (please see CATG report). The CATG process is being reviewed in order to make it simpler for people to use well and understand.

This is happening alongside promotion of the **My Wiltshire App** as a means of reporting issues directly to the Wiltshire Council services which can address them, e.g. as a way to report potholes direct to the appropriate service. An interactive session on how to use the My Wiltshire app will be coming up at a future Area Board meeting, so look out for this to learn more!

Dorset & Wiltshire Fire and Rescue Service have launched a campaign targeted at parking which makes it impossible for vehicles to get through certain streets in an emergency. Please see the flyer in the image at the bottom of this page as an example of their message and think of them when parking on narrow streets.

IAMROADSMART is offering a discounted **YOUNG DRIVER INITIATIVE** to increase road safety amongst our younger drivers. Contact Chris Gleed 01793 773214 for more information.



Official Provider



Priorities November 2016

1. Anti-social behaviour (70.59%)
2. Highway safety (63.53%)
3. Domestic violence (50.59%)

3. The Victim Support service is available to support anyone living with domestic abuse, see here for further information: <https://www.victimsupport.org.uk/>



Royal Wootton Bassett and Cricklade Community Identified Priorities Newsletter. March 2018

Culture

RWB and Cricklade Community Area

What has been done so far:

Celebrating Age events continue to be a roaring success across the community area, with the most recent being a reminiscence show and tell session with Purton Historical Society and Wiltshire Museum at Purton Friendship group on Friday 9th February.

This built on the wonderful 'Journey through the dance bands of the 1920s-40s' at Ridgeway House, The Lawns, Royal Wootton Bassett with Duncan Galloway, band leader of the Pasadena Roof Orchestra and 'Around the World in 80 Days', which was performed by Angela Laverick at Lyneham Village Hall, complete with a fish and chips lunch for the 3M's memory group.

This monthly programme of cultural events has been brought into the local area funded mainly by the Arts Council and supported by the Area Board. Events will initially be free of charge and are targeted towards celebrating our older people and their lives well lived.

The next event is: 'The Audition' - a juke-box opera on your doorstep, at the REME Museum on Wednesday 30th May from 2.00-4.00pm.

Brace yourself for an hilarious, singalong, light-hearted and surprising performance of some of the best bits of opera. Written by popular playwright Rachel Barnett, directed by award-winning director Helen Eastman and featuring internationally renowned singers. While you are there, why not stop for lunch at the lovely Crowns Café before the show?

Places are limited, so booking is necessary for this special event. Please contact your community engagement manager on alexa.davies@wiltshire.gov.uk or 01249 706610 to reserve your free space.

A **Community Asset List** has been put together to allow community groups, charities and town and parish councils to share their assets locally. If you have an asset you are willing to share with your neighbours, or are needing something which another local parish council or community group might already have and be willing to lend, please get in touch to find out more: alexa.davies@wiltshire.gov.uk, 01249 706610.

- Priorities November 2016**
1. Affordable access to cultural activities (73.26%)
 2. Library use (58.14%)
 3. Diversity and social inclusion (58.14%)





Royal Wootton Bassett and Cricklade Community Identified Priorities Newsletter. March 2018

Economy

RWB and Cricklade Community Area

What has been done so far:

1. The **Bassett Apprenticeships Fair** took place last year, providing information to local businesses and potential apprentices about apprenticeships. See previous newsletter for further details.

Priorities November 2016

1. Apprenticeship and work experience (71.43%)
2. Training and skills (70.24%)
3. Broadband and digital (52.38%)

The **Work Wiltshire** site is a fantastic resource with information about local apprenticeships and work experience in Wiltshire: <https://workwiltshire.co.uk/>

Apprenticeship opportunities at Wiltshire Council continue to be promoted via the Area Board social media channels. Follow @RWBandCCEM (community engagement manager) and @wilcolyneham (Chair of the Area Board) on Twitter or search for the Royal Wootton Bassett and Cricklade Area Board page on Facebook for regular updates.

2. **Learndirect** offer **FREE training and skills courses** to help people find work. If there is sufficient demand courses can be put on locally, for instance for **over 50s** developing digital skills to help them re-enter the workplace. Please find further information here: <http://www.learndirect.com/>. Laurie Wills is your local referrals coordinator for Learndirect: Laurie.Wills@learndirect.com.

Improving opportunities for ex-military personnel through training and skills is an area which John Stanwix from Support Empower Advocate Promote (SEAP) military advocacy is helping to address locally. John was at the November Area Board meeting and is interested in holding sessions in the RWB community hub and library once it is ready.

The Swindon & Wiltshire's **Women in Business Conference 2018** at Bowood Hotel was a smashing success on Thursday 8th March, as part of International Women's Day 2018 celebrations. Bringing together entrepreneurs and businesswomen from across the south west, this year's focus was on innovation and creativity and an opportunity for businesswomen to learn, reach out and connect.

3. With the weather as it is, thinking of booking a holiday online? Remember there is a great group of **WithIT** volunteers at the **RWB library on Mondays 10-11am** who are able to help you learn to use your ICT device completely for free. In Cricklade, the group of digi-champions meet in the **Cricklade leisure centre cafe on Mondays 10-12 noon** and are happy to help anyone keen to get to grips with their technology! Why not pop along to see if they can help you? Of course, if you are a whizz with technology, perhaps you could support others to learn? Drop in to find out more.

Women in Business Conference 2018





Royal Wootton Bassett and Cricklade Community Identified Priorities Newsletter. March 2018

Environment

RWB and Cricklade Community Area

What has been done so far:

1. Due to snow, unfortunately the Great British Spring Clean is being rearranged, with the majority of litter picks now scheduled for the weekend of **23rd, 24th and 25th March**. Please see individual town and parish council websites for updates and further information.

Priorities November 2016

1. Fly tipping and litter (74.12%)
2. Improving rights of way (42.35%)
3. Protecting the countryside (36.47%)

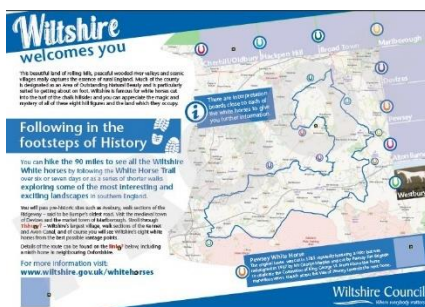
RWB&C is working with the **Wiltshire Wildlife Trust** to run a campaign to reduce litter across the community area and encourage people to reduce their waste and re-use materials where possible. On 8th February, Jess and her team ran a fascinating sell-out tour of the materials recycling facility at Compton Bassett. If you were unable to make this date but would like to attend a tour to learn more about recycling, a second tour is being arranged - please contact alexa.davies@wiltshire.gov.uk, 01249 706610 to express your interest (date to be confirmed).

2. Existing interpretation boards for Wiltshire’s White Horses will soon be replaced across the county, pending agreement by all the Area Boards with white horses in their community areas. The signs will be updated with QR codes with links to further information about the horses and the White Horse Trail (a walking route which links them together), audio and braille, to make the information available to more people and help encourage people to explore our beautiful county (hopefully alongside taking part in the Big Pledge campaign)! Please find a draft of a new sign below.

CATG continues to work on the priority to improve rights of way (see separate report).

3. Active community groups who have received community grant funding continue to make good progress improving rights of way, including the Purton Volunteers Footpath Group and Cricklade Dance Common.

The Bradenstoke parish will be taking part in the **WW1 tree planting legacy project**, thank you to the team here for your support in committing to planting and looking after the baby trees.





Royal Wootton Bassett and Cricklade Community Identified Priorities Newsletter. March 2018

Health, Wellbeing and Leisure

RWB and Cricklade Community Area

What has been done so far:

Priorities November 2016

1. Have you heard of Action for Happiness? How about Happy Cafes? Do you know a café where the norm is to support local people and help make them smile? Please see here to find out more and get in touch if you know a business which might like to become involved in the local area:

<http://www.actionforhappiness.org/happy-cafe>

1. Mental health (75.29%)
2. Healthy lifestyles (68.24%)
3. Support for carers (61.18%)

2. Would you be interested in getting involved with a therapy garden to help those in need, like the TWIGS Community Gardens in Swindon? Please contact your CEM if you would like to register your interest. Find out more about TWIGS here: <http://www.twigscommunitygardens.org.uk/>

2. A brand new **seated sports programme** is running in Royal Wootton Bassett.

The seated sports programme has been developed by Wiltshire Council's sports development team and the Royal Wootton Bassett and Cricklade Area Board. As part of the feedback from the joint strategic assessment process, local residents expressed that accessible sports provision for older residents was a key priority in the town.

The programme is an adapted sports offering for older people, people recovering from an illness or injury or perhaps those who wish to take the first steps towards a healthier lifestyle. All sports and activities take place from a sitting position, allowing participants to take part in a low intensity, highly enjoyable form of physical activity.

The weekly session will take place from 10am to 11am each Thursday at Royal Wootton Bassett Memorial Hall and is free of charge for participants, so please come and join us!

Cllr Allison Bucknell says "Taking part in a regular form of exercise is proven to be extremely beneficial to people of all ages. It is brilliant that we are able to offer something different to help those less able join in with sporting activities. Hopefully they will get the bug and soon be demanding all sorts of other exercise, and that we can have the fittest older population in Wiltshire!"

To register for the seated sports programme, or to request further information, please email SportsDevelopment@wiltshire.gov.uk or call Matthew Pearson, sports development officer, on 07827 982279.



Royal Wootton Bassett and Cricklade Community Identified Priorities Newsletter. March 2018

Older People

RWB and Cricklade Community Area

What has been done so far:

1. **Ellen Blacker** has been super busy helping local older and vulnerable people with their winter grants to help them keep well over the colder months. Applying for Surviving Winter grants has been very time consuming for Ellen, but successful clients receive £300 towards their winter fuel bills. Please find a case study from Ellen's work below, which makes for a lovely read:

Priorities November 2016

1. Social isolation and loneliness (80%)
2. Support for carers (57.65%)
3. Dementia (54.12%)

This lady has been known to me for a couple of years. She was a Social Worker but now suffers PTSD and is slowly gaining confidence again. Over the last couple of years, I have seen her grow from a really isolated person who wouldn't go outdoors and kept all of her doors locked (rather scary when she locked us in!). She still has a way to go, but now goes out walking her dogs and does gardening for one of her elderly neighbours. She effectively lost 5 years of her life whilst she was in hospital and has no memories of that time. Sadly, no one considered her home during this time and she racked up huge debts with the utility companies. Fiercely independent, she has scrimped and saved, becoming a bit of a hunter gatherer as she walks her dogs, and lives in a very cold house. She only heats her water once a week in order to shower, relying on cold water for the rest of the week. Her house is really cold! Because of this strategy, she is now mostly out of debt. The criteria for the Surviving Winter grant is that the household must be in Fuel Poverty, which she isn't as she has been paying off the debt. Thankfully, Wiltshire Community Foundation have a flexible approach and I was able to make a case for her to be accepted for the award and she was granted £300.

Her email quote:

"Thank Goodness for the keeping warm grant. Well needed with the snow over weekend! Thanks Ellen, me and the girls (dogs) would def been cold with that snowfall"

Me- It's a fab grant scheme. Donations are from those who receive the government pensioners winter grant automatically and don't need the money. About £70k in Wiltshire! They are the real heros!

"Wow that is really amazing. I have sent the organisation a card to say thank you. It is lovely. I know I would have struggled in this weather. I keep being told to keep warm by my support workers. I apparently had double pneumonia and was hospitalised before so they were a bit concerned. So it is nice that when they come the house is warmer now, so they know I am taking better care of myself."

Brilliant scheme and so appreciated."

Ellen has also set up a Sunday Lunch Club at The Wiltshire for those who would otherwise be on their own on this day, please get in touch if this might help someone you know - 07557 922020, ellen.blacker@wiltshire.gov.uk.



Royal Wootton Bassett and Cricklade Community Identified Priorities Newsletter. March 2018

Housing

RWB and Cricklade Community Area

What has been done so far:

1. During the regular Area Board catch up, the housing theme from the JSA has been identified as the theme which the Area Board could do more to address.

Given this, the March Area Board meeting has a housing theme. The meeting will take place on Wednesday 21st March at RWB Memorial Hall. GreenSquare will be presenting at the meeting about their local developments; work has commenced on a major GreenSquare redevelopment project bringing forward more affordable housing at Culverhay, Cricklade.

2. The Area Board is working closely with **GreenSquare** as the largest local housing association to help address the issues they face, for example in Cricklade the association have been linked to the digi-champions, for the digi-champions to offer support to GreenSquare residents. Funding has been also given to various GreenSquare projects, such as skate sessions for young people.
2. Commitment to the RWB&C **Child Poverty Action Plan** (as presented at the 20.07.16 Area Board meeting) is ongoing and the Area Board had a presence at this year's Child Poverty Summit to meet other local groups and organisations working to address this issue and learn more about what can be done to help.

In addition the Area Board continues to work in partnership with the Children's Centres and MOD Lyneham to help address issues relating to deprivation and poverty. The community hub in RWB is envisaged as a space for many more local projects and campaigns in 2018.

3. **Superfast Broadband continues to be rolled out across the county.**

Priorities November 2016

1. **Affordable housing (88.24%)**
2. **Deprivation and poverty (64.71%)**
3. **Digital engagement and broadband (48.24%)**



Royal Wootton Bassett and Cricklade Community Identified Priorities Newsletter. March 2018

LINKS TO USEFUL INFORMATION:

[WILTSHIRE INFORMATION NETWORK](#)

[WILTSHIRE JSA NETWORK](#) website

[ROYAL WOOTTON BASSETT & CRICKLADE AREA BOARD JSA report 2016-18](#)

RWB & C Project Bank – soon to be available on the revised ‘Our Community Matters’ website:

<http://rwbc.ourcommunitymatters.org.uk/>

For regular updates from the RWB&C Area Board ...

Follow us on Twitter - @RWBandCCEM

Facebook – Royal Wootton Bassett and Cricklade Area Board (Page)

AND sign up to *Our Community Matters* for your weekly *Royal Wootton Bassett and Cricklade local newsletter*:
[here](#), we would love to hear from you.